



B.E.A.T. for Mortgage 2008 Installation Instructions

Features:

- Auto calculations
- Copy mailing address to subject property with the click of a button
- Built-in Training Guide
- Registration Check/New Registration Scheme
- Available Add-on for multiple loan tracking

Go to www.crmcomputers.com to download a 30-day trial of BEAT for Mortgage 2008.

Once file is downloaded double click on the Setup_BEAT2008.exe file. You will be prompt for a password. The password is **CRMConnection**, enter the password and click on *ok*.

Two files will be extracted to the location C:\BEAT\Installation Files, Setup.exe and Setup_BEAT2008.msi. Next, click on *My Computer* on you computer desktop, browse to C:\BEAT\Installation Files, and then double click on the Setup.exe file. You will be prompted with the B.E.A.T. for Mortgage 2008 Welcome Screen.



Figure 1

Click *Next*.

The next screen will be the License Agreement Screen. To agree to the User-License Agreement select *I agree*. Click *Next*.

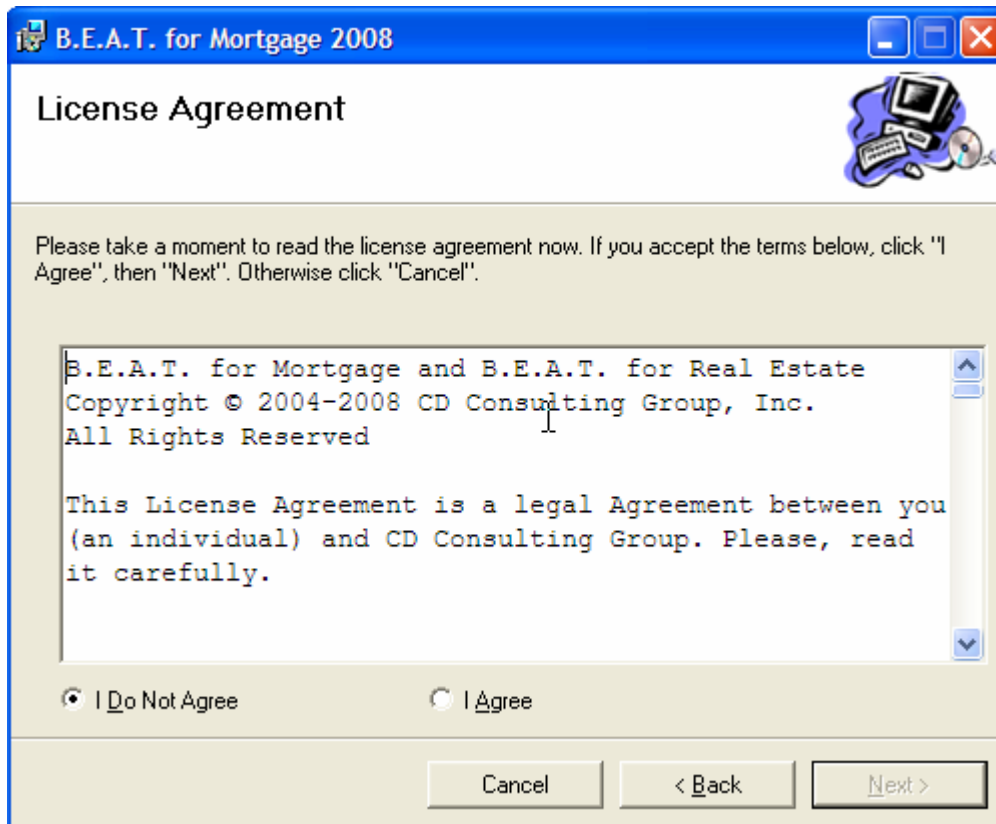


Figure 2

Next you will be prompted with the Select Installation Folder screen. You will notice a default location already select; please **don't change because BEAT functionality is dependent upon the default location.**

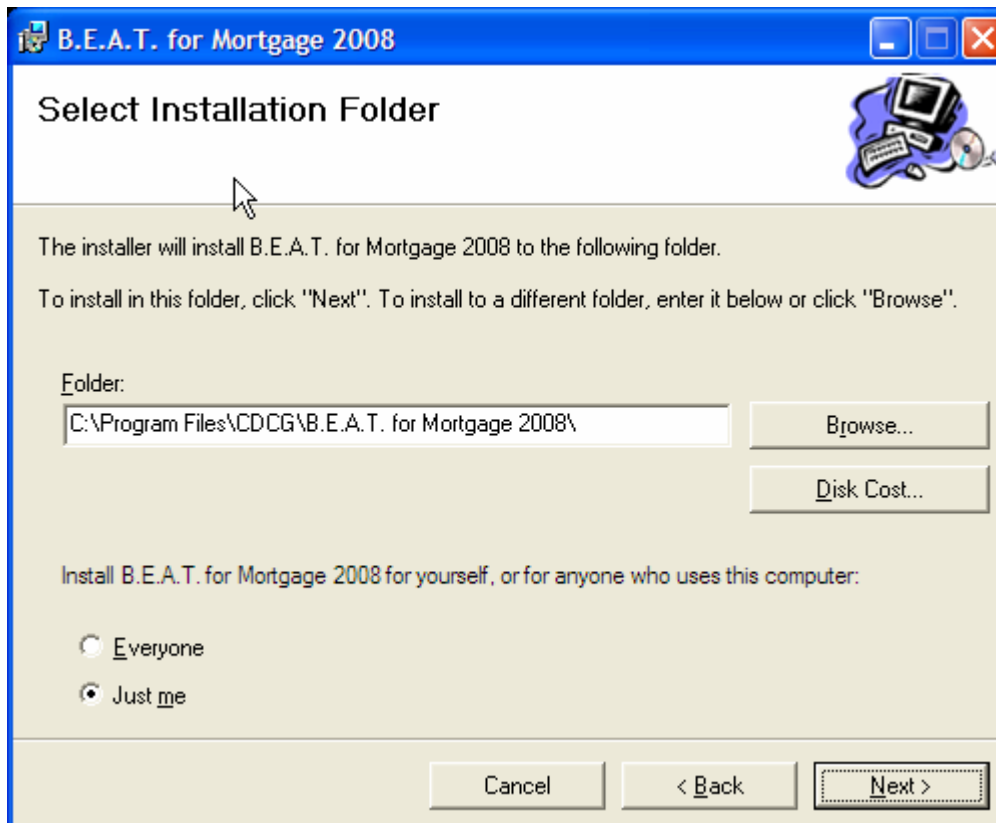


Figure 3

Next, you will be prompted with the Confirm Installation Screen, click *Next* to continue.

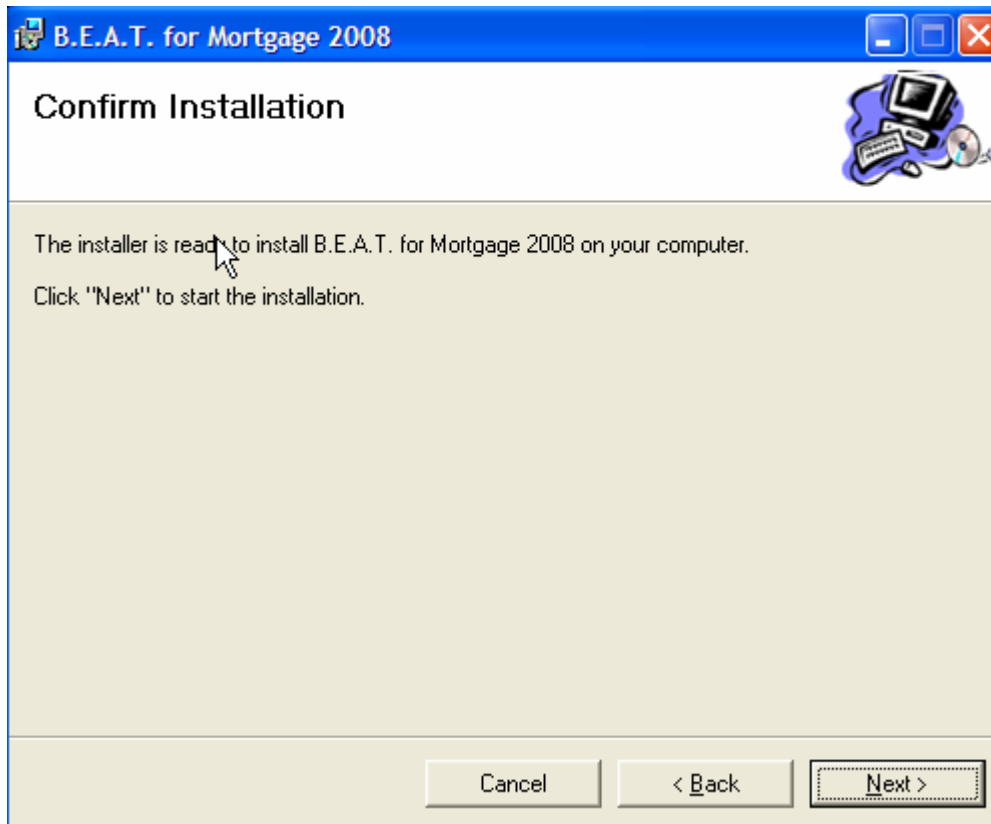


Figure 4

BEAT should be installing at this point.



Figure 5

Installation Completed. Click Close.

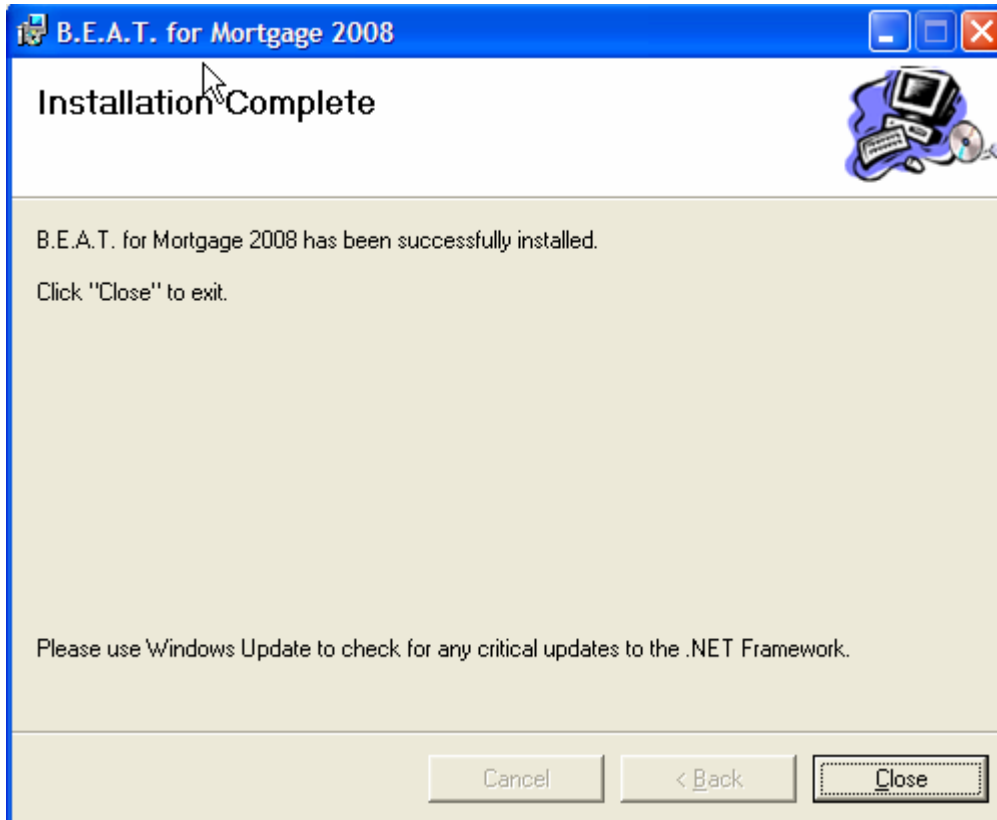


Figure 6

Open ACT to a blank screen.

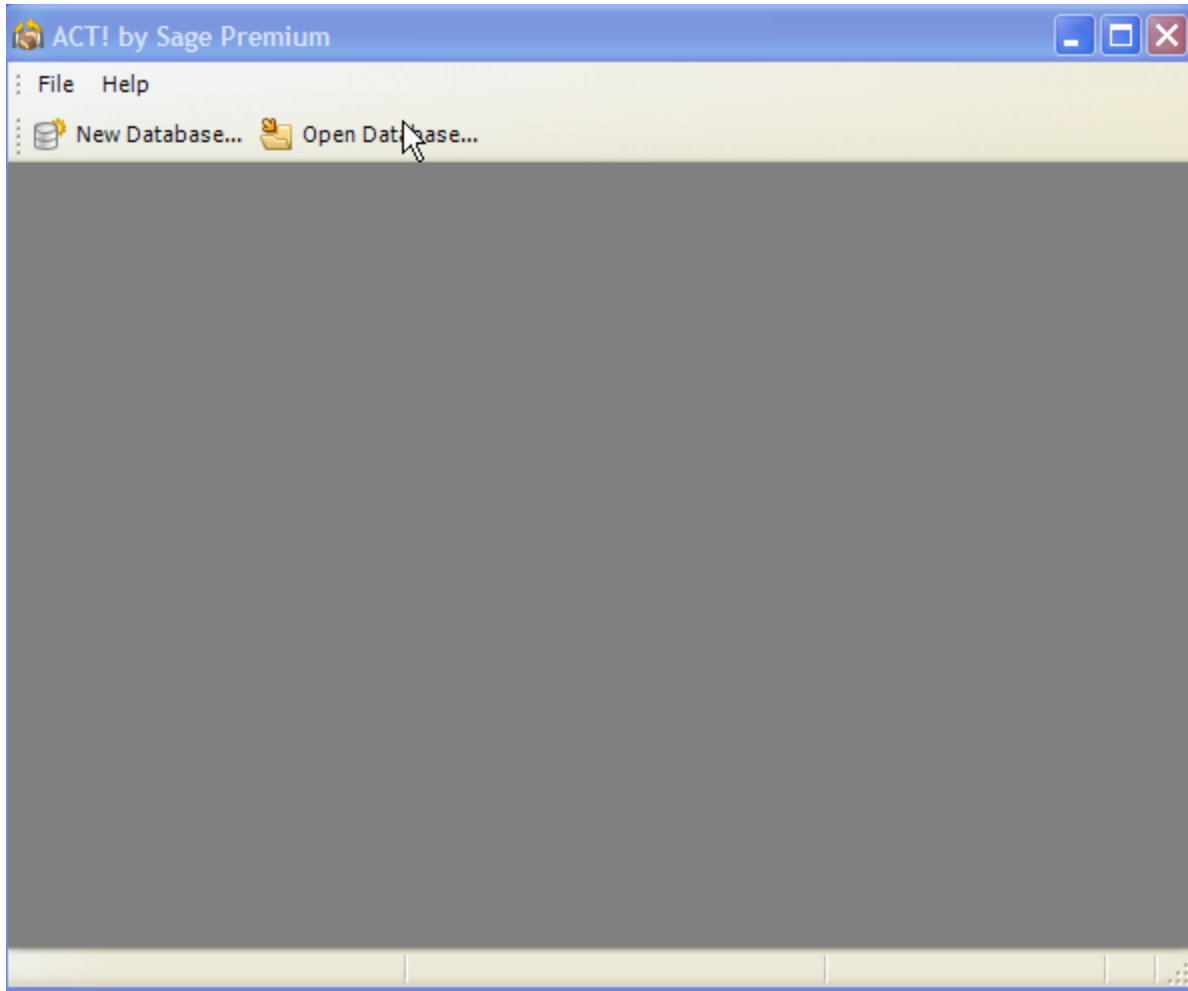


Figure 7

Next File-→Restore-→Database, then you will be prompted with the **Restore Database** screen, select *Restore As*. Click ok.

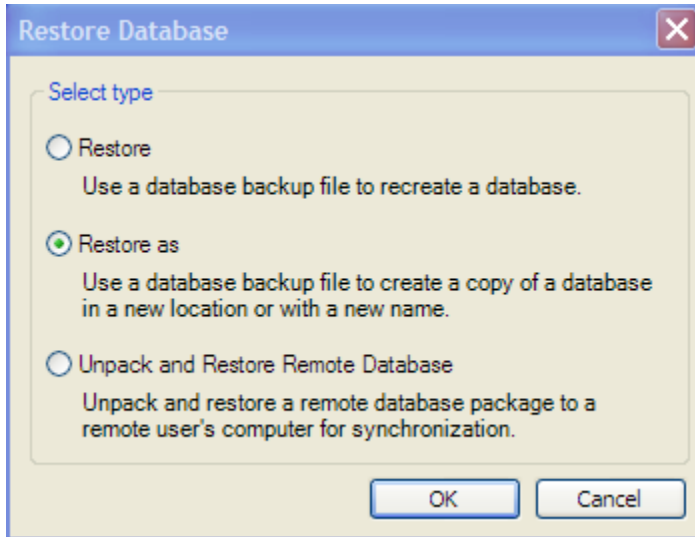


Figure 8

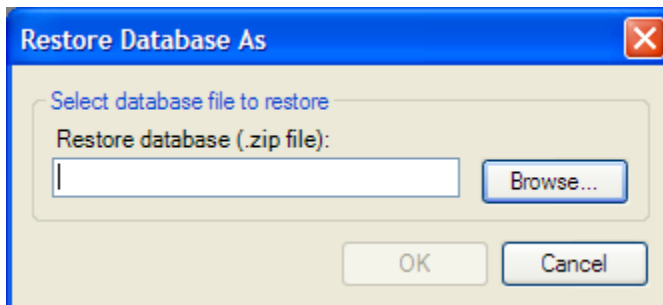


Figure 9

Next click on Browse...and then click on **My Computer**. Click on the local disk (C), browse to \program files\CDCG\B.E.A.T. for Mortgage 2008\. Select the file Skeleton_1101199.zip for ACT! 2008 Premium (version 10.0.1) or SkeletonStan_10010.zip for ACT! 2008 Standard (version 10.0.1), then click on Open.

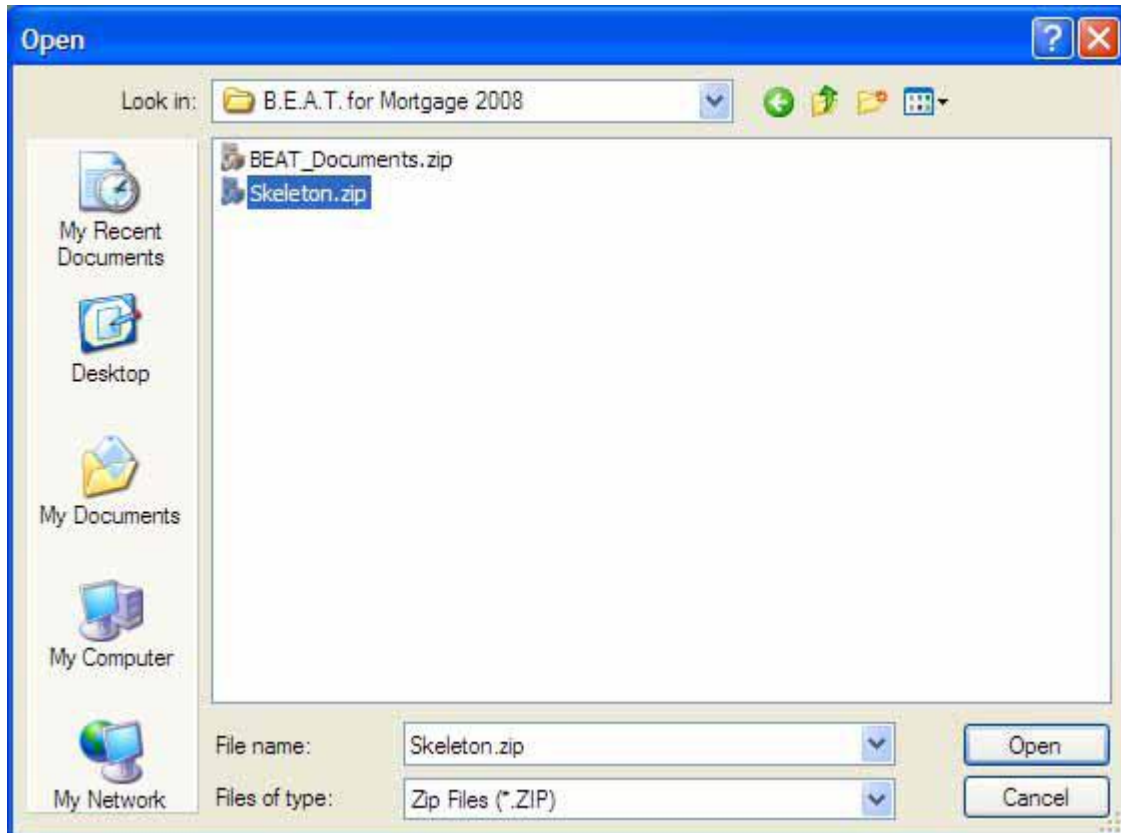


Figure 10

You should be back to the *Restore Database As* Screen, then click OK.

Now you should be at the below screen.

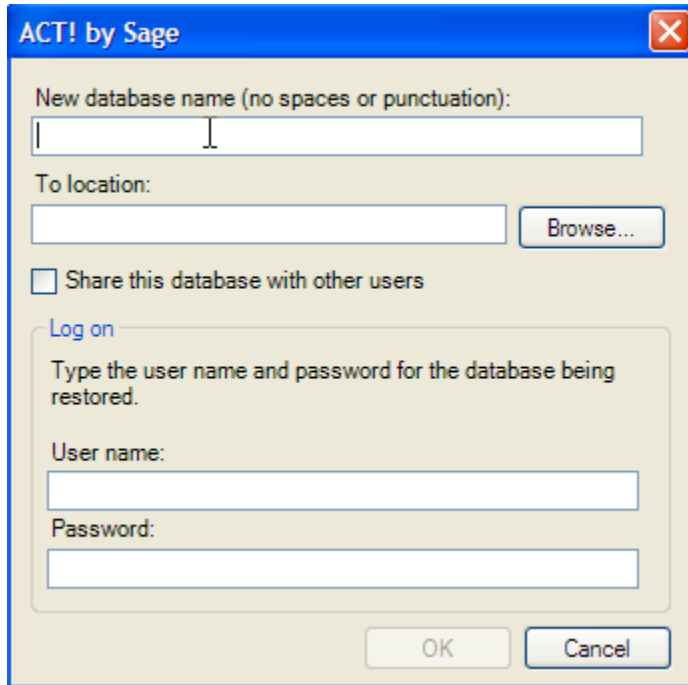


Figure 11

Enter the following information in Fields or Boxes:

New database name: BEAT

To Location: C:\BEAT

User name: Anthony Polk or admin (if one or the other should work)

Password: <no password>

Once information is entered click OK. **Note:** If prompted to create a new directory, select yes.